



Questionnaires should be engaging.

E2E Research's engaging questionnaire experience helps you fill the gaps so you can take on more projects and spend more time adding value for your clients.



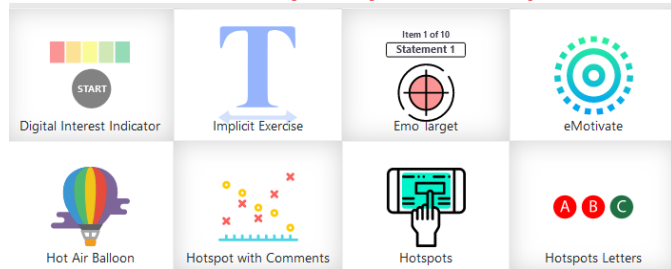
Let us partner with you. End-to-End.

End-to-End Questionnaire Services

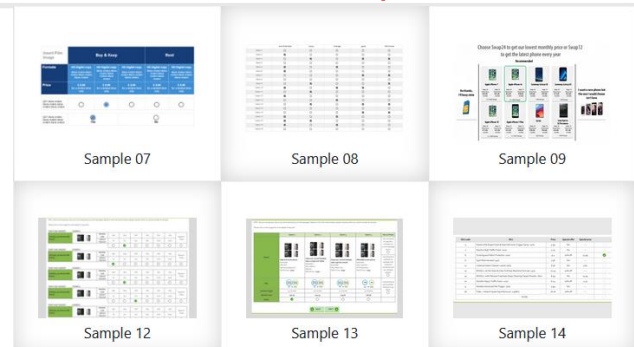
- Design, development, and guidance on the development of simple and complex discussion guides, screeners and questionnaires
- Development of global sampling plans
- Management of sample, quotas, emails, & incentives
- PowerPoint slides, written reports, white papers, and infographics
- Real-time, custom digital fingerprinting & data validation
- Full scripting in a variety of platforms + hosting
- HTML5, JavaScript, Flash tools
- More than 100 "Analyze MY Click" modules available including hotspots, word clicks, drag and drop, speed clicks, and highlighters
- API for real-time translation, multi-country, multi-lingual



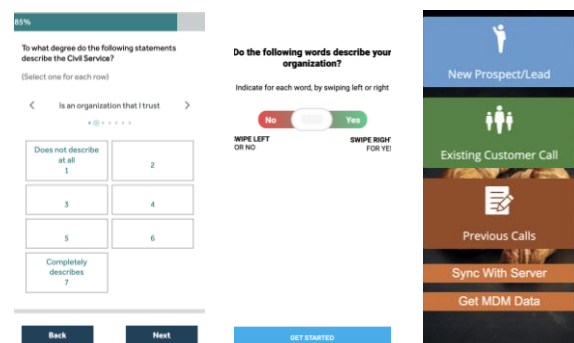
More Than 100 "Analyze My Click" Templates



More than 20 ConJoint Templates



Mobile First Strategies



- Mobile First: Content-first, simple, easy navigation, minimal scrolling, avoid pop-ups and new windows
- Device Agnostic: Mobile devices, Tablets, Laptops, Desktops
- Browser Accessible: IE 8.0 & above, Chrome, Firefox, Safari

For more than ten years, E2E Research has specialized in converting enigmas into enlightenment for researchers and insights companies around the world.

We offer a full range of market research, data analytics, and business intelligence solutions to help you extend your services, fill the gaps, and offer End-to-End value for your clients.

